

SecuAngel

User Guide

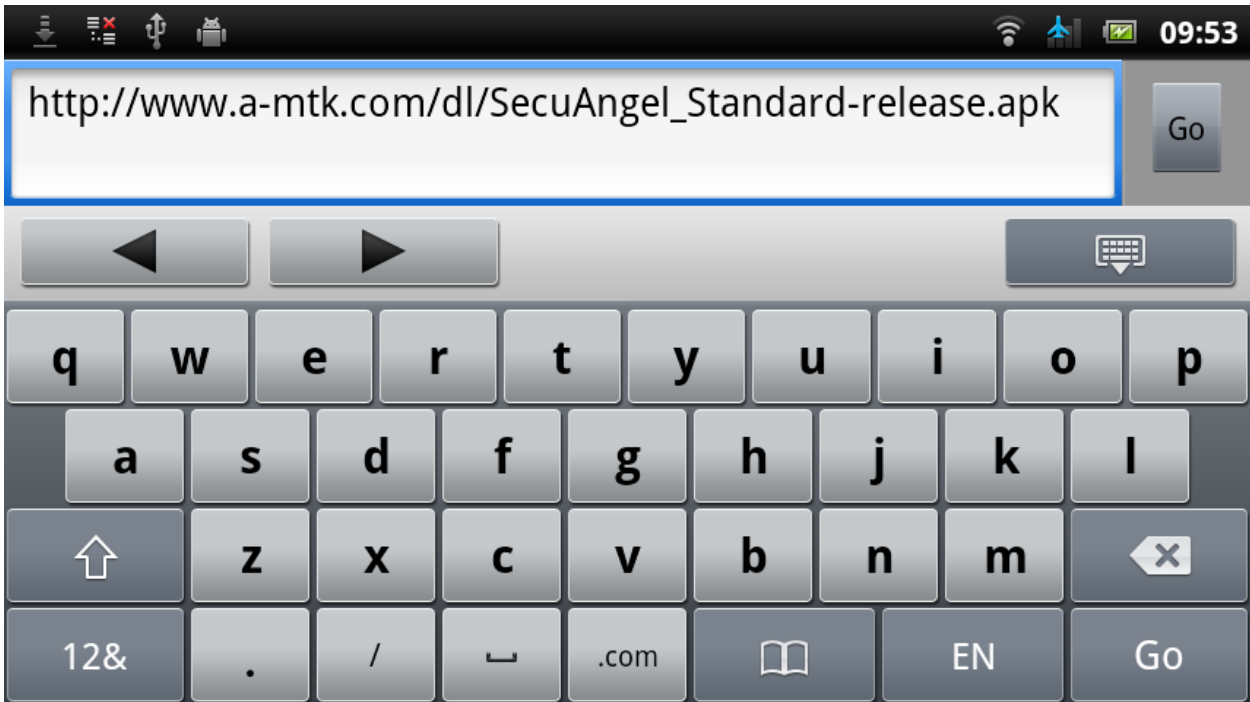
Rev. 20110712

1. Installation

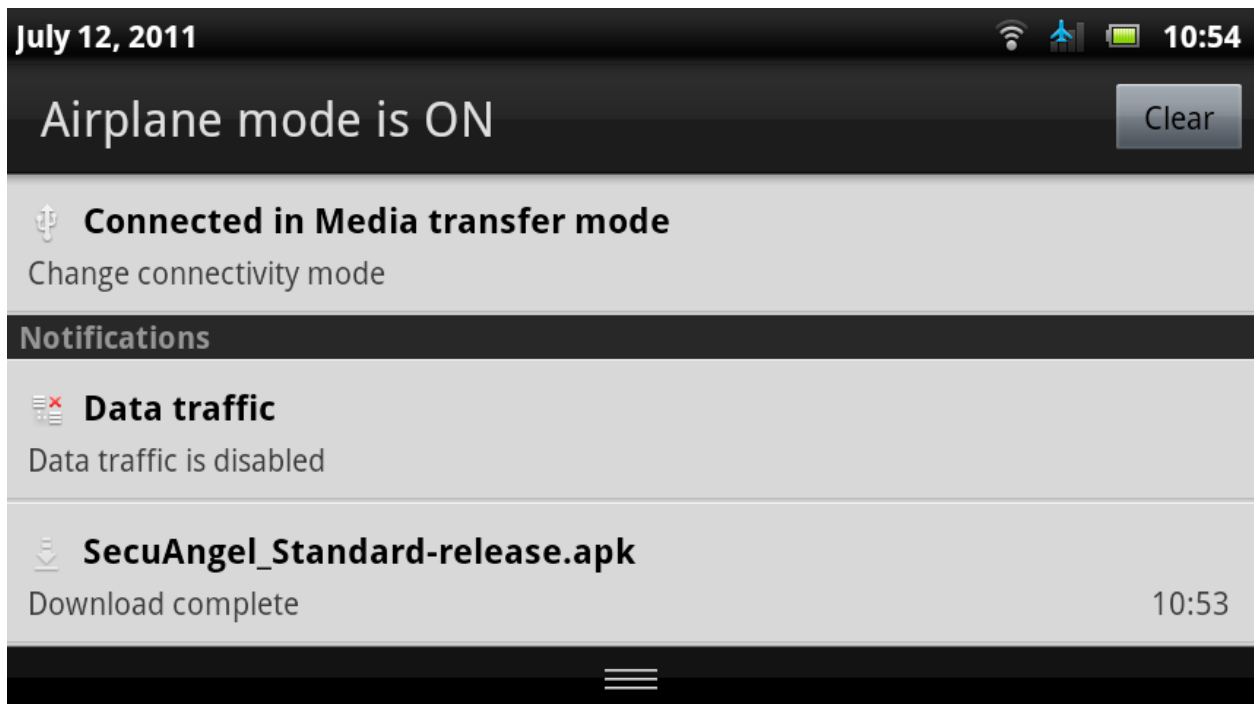
1.1. Download From Web

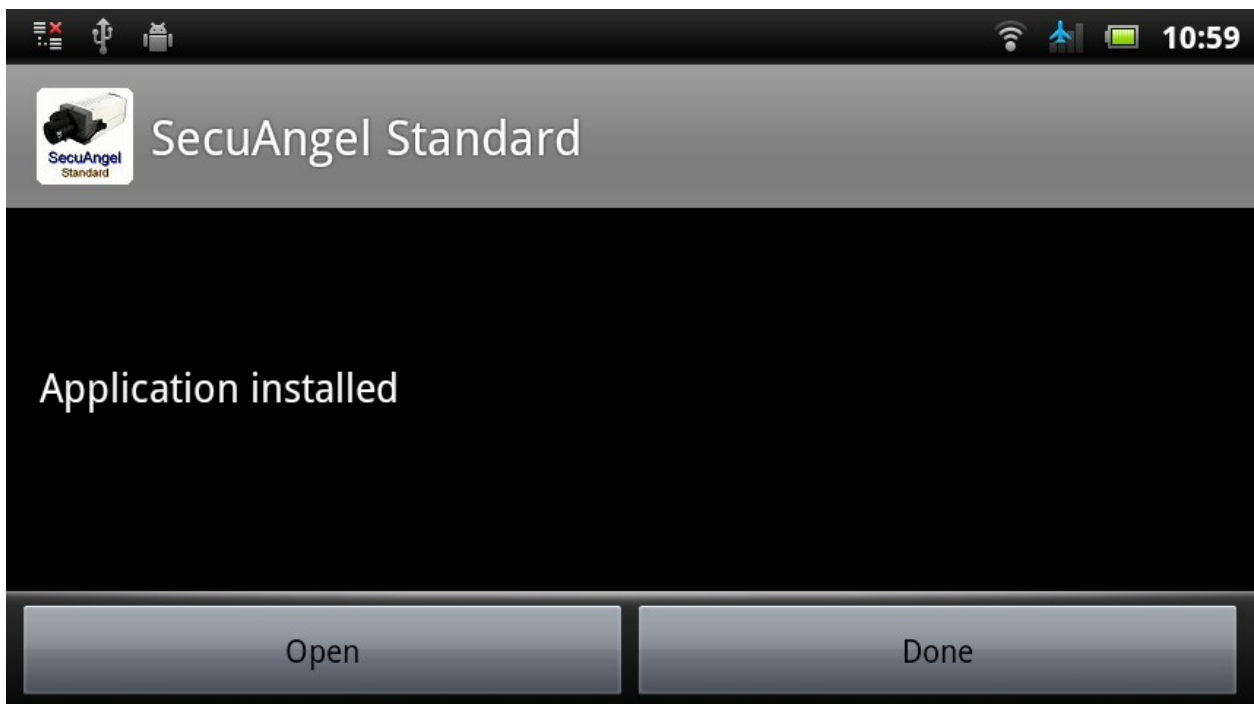
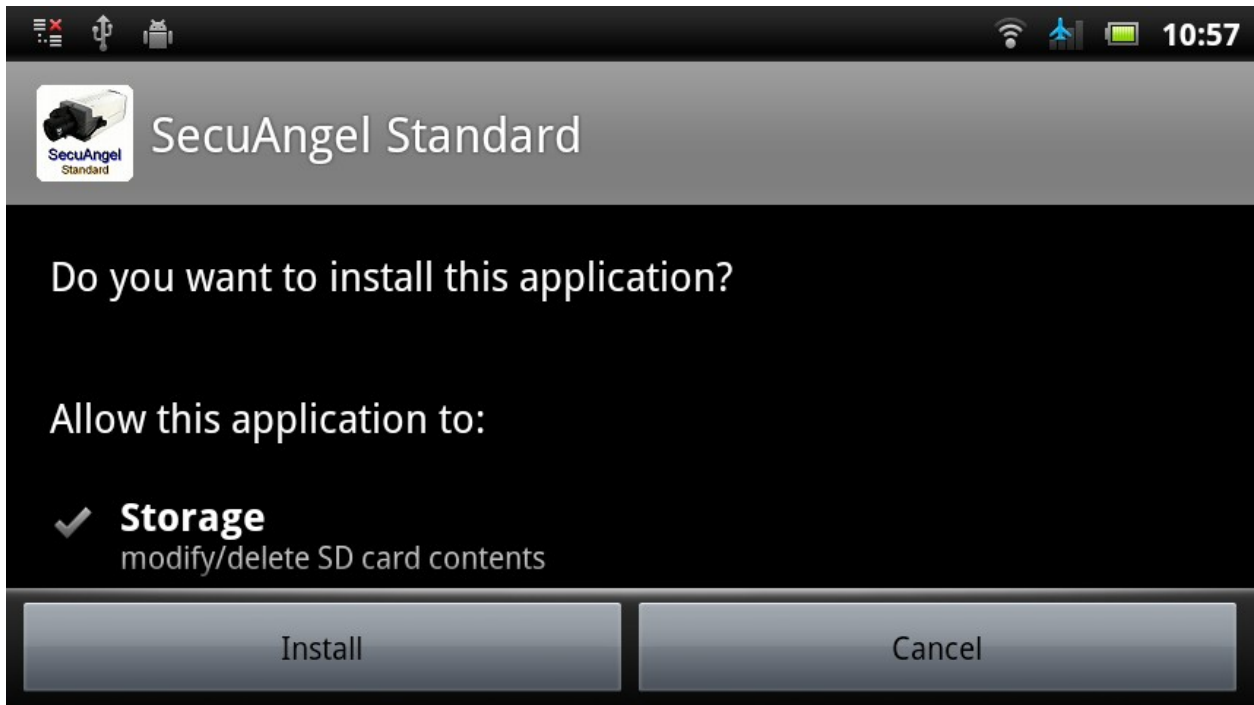
Open the browser on your Android device, enter the URL to download:

http://www.a-mtk.com/dl/SecuAngel_Standard-release.apk



After downloaded, it will display a notification on the status bar. Drag down the status bar, you will see the download notification. Click the notification to install the application.





Now, you may click “Open” to run the application and refer to section 1.3 for the first run.

1.2. Download Via QR Barcode

1.2.1. Use QR Code Directly

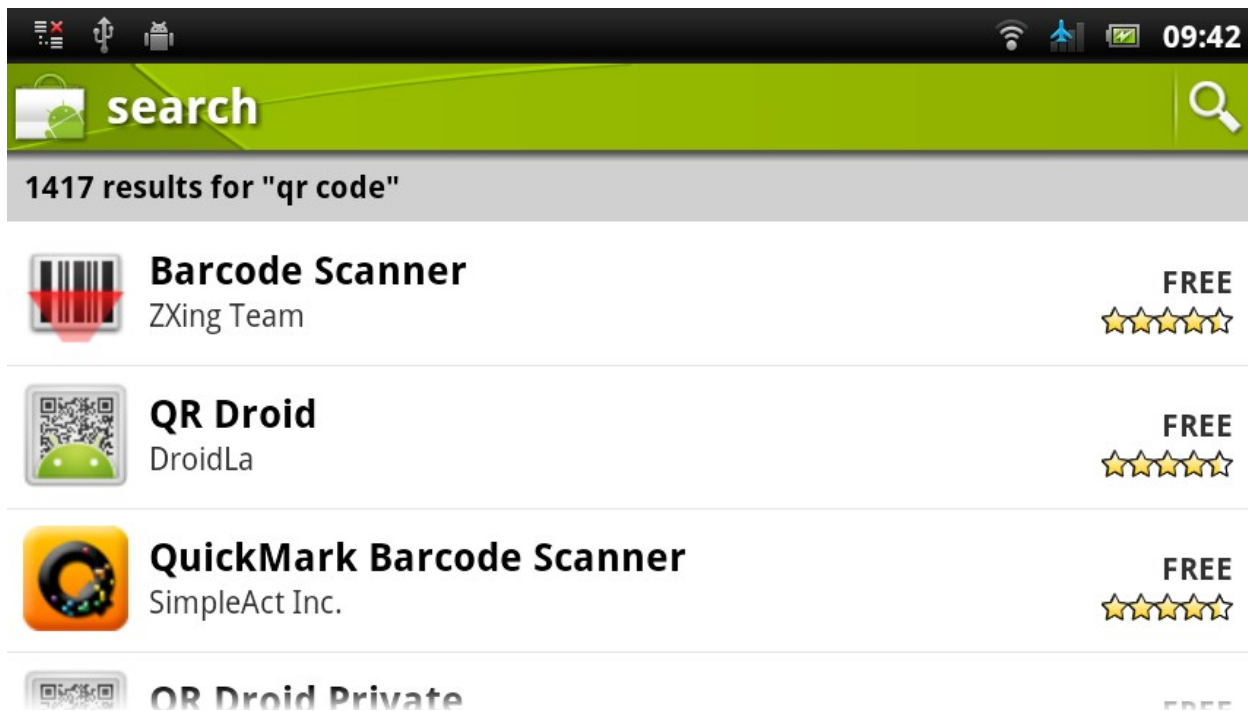
Open a barcode reader on your Android device. Take a shot the following QR code image to get the link of download.



If you have no barcode reader, please refer to the next section.

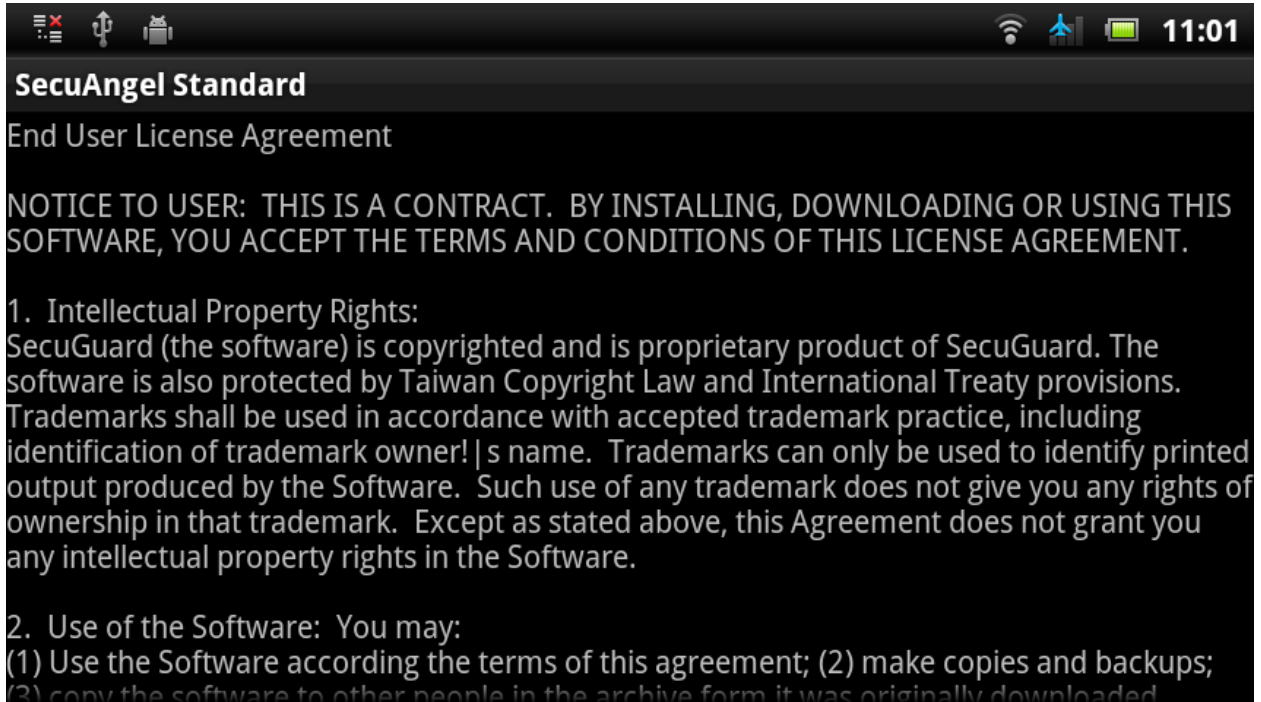
1.2.2. Download Barcode Reader

Open Market application on your Android device. Search “QR code” on the search bar. You will see a list of barcode reader software. Download one the them and run it to take a shot of QR code shown above.

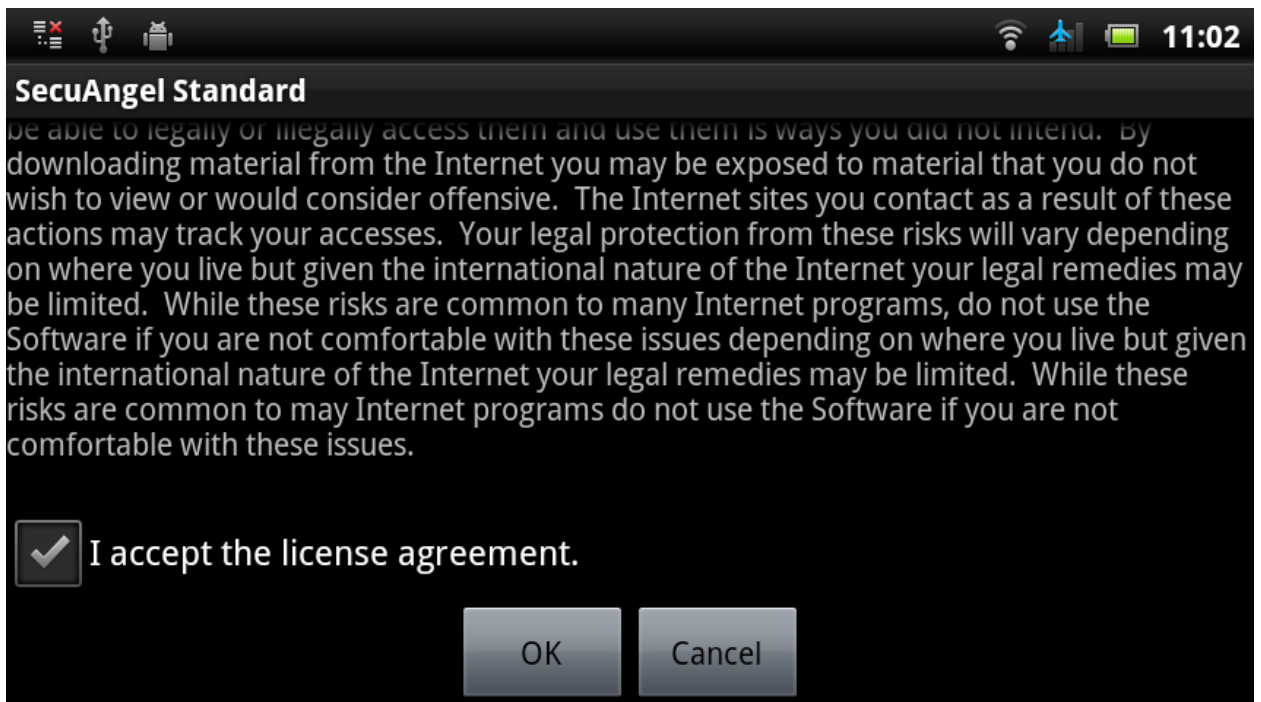


1.3. First Run

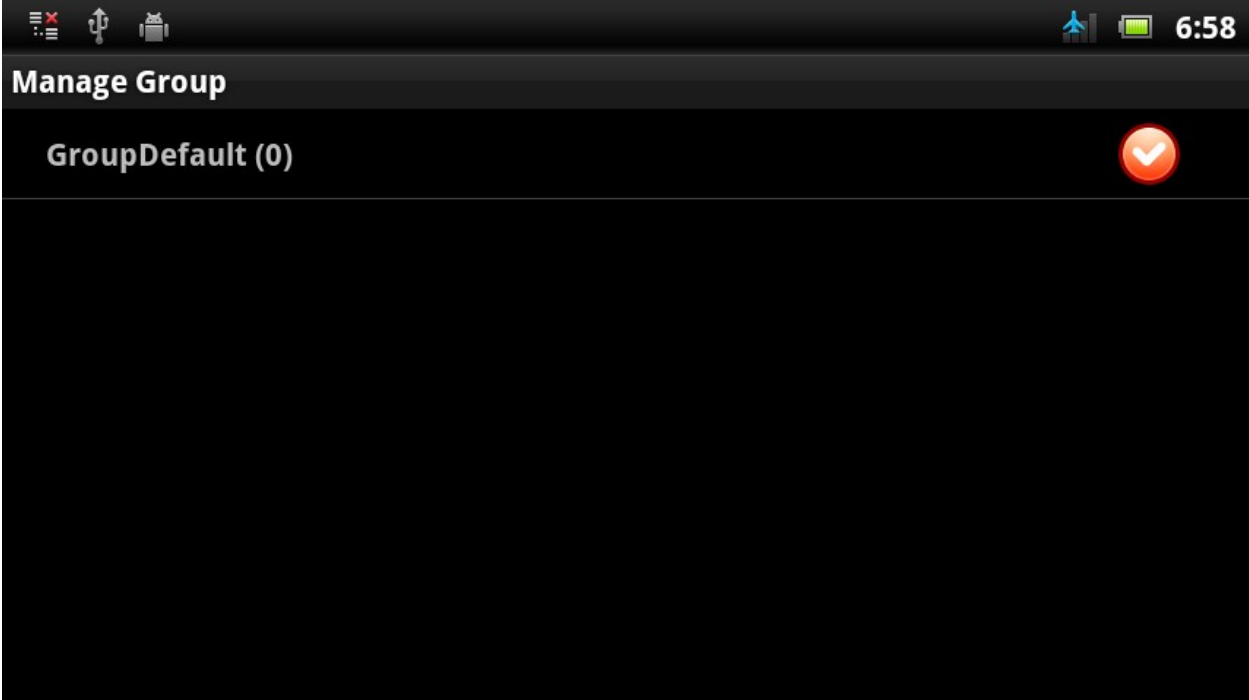
At the first time to run the application, you have to agree the End User License Agreement (EULA) to continue to use the application.



Check the “I accept the license agreement” box to accept the agreement.



After you agree the EULA, you will enter the “Manage Group” page. The application has a default group and then you may modify it. See the next section “Manage Group” to manage your groups.

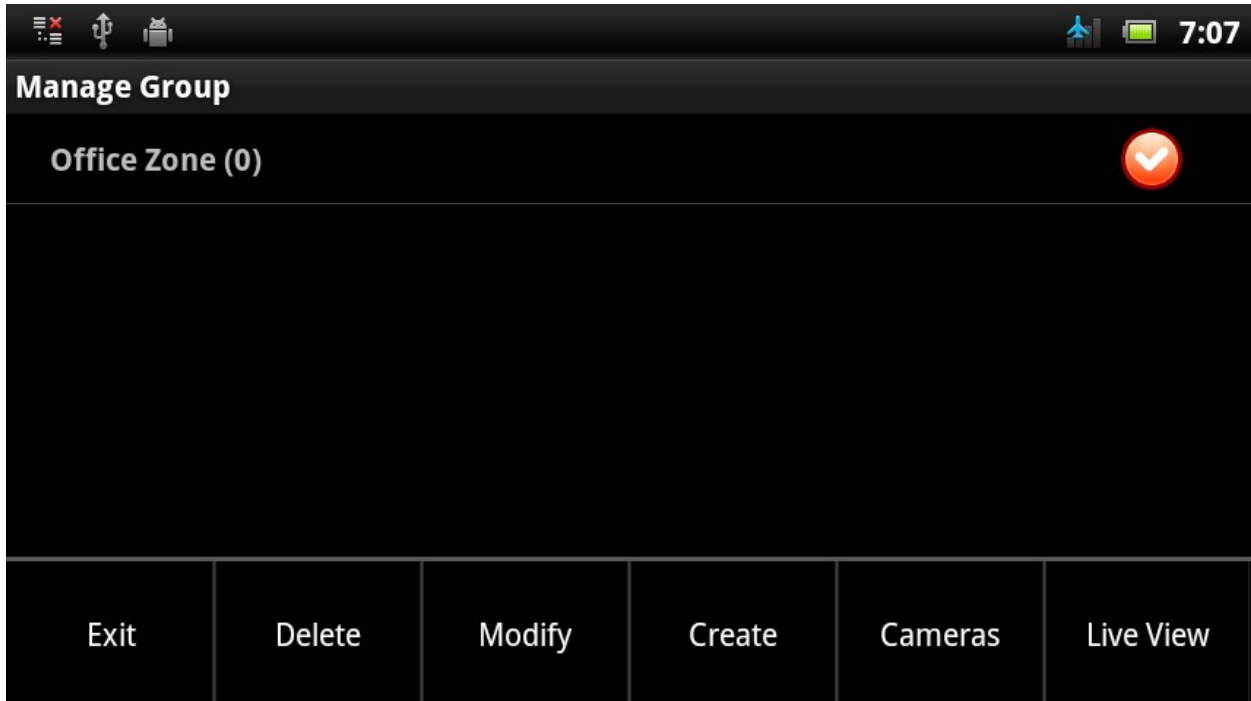


2. Manage Group

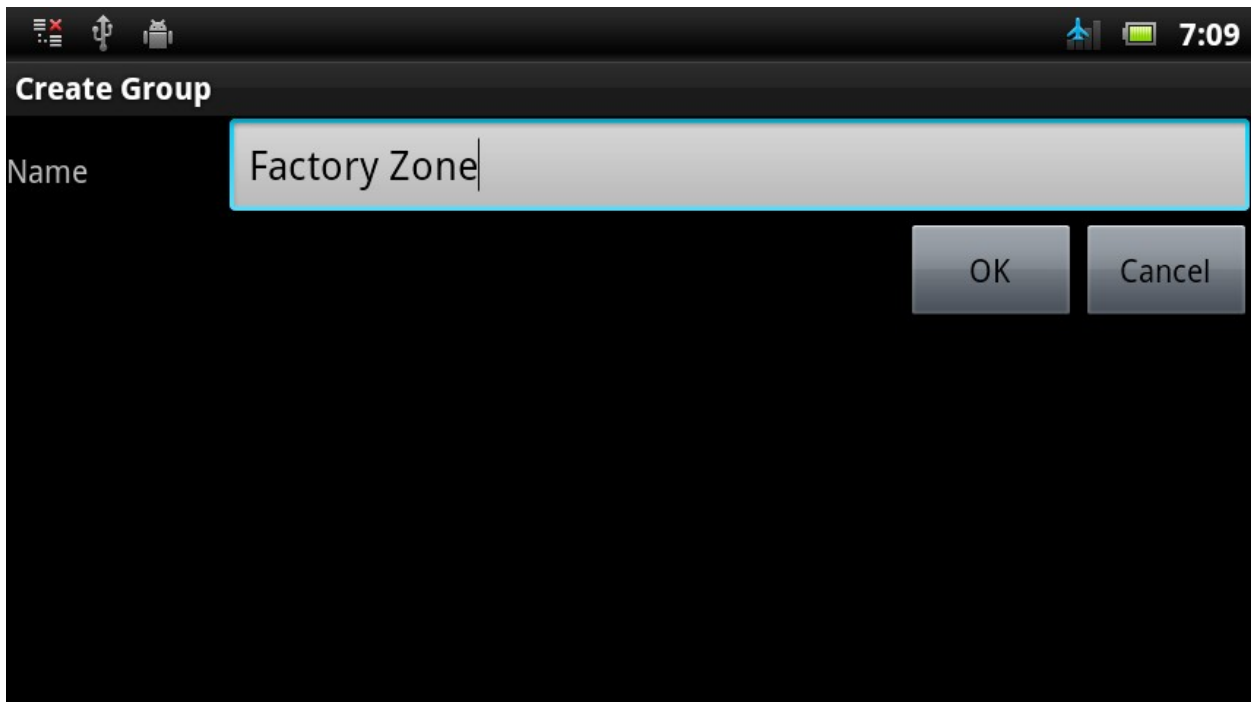
The first screen of the application is “Manage Group”. Just click the menu button on your Android device to display the menu.

Use “Create/Modify/Delete” to manage your groups.

Note: The max number of groups is 4.

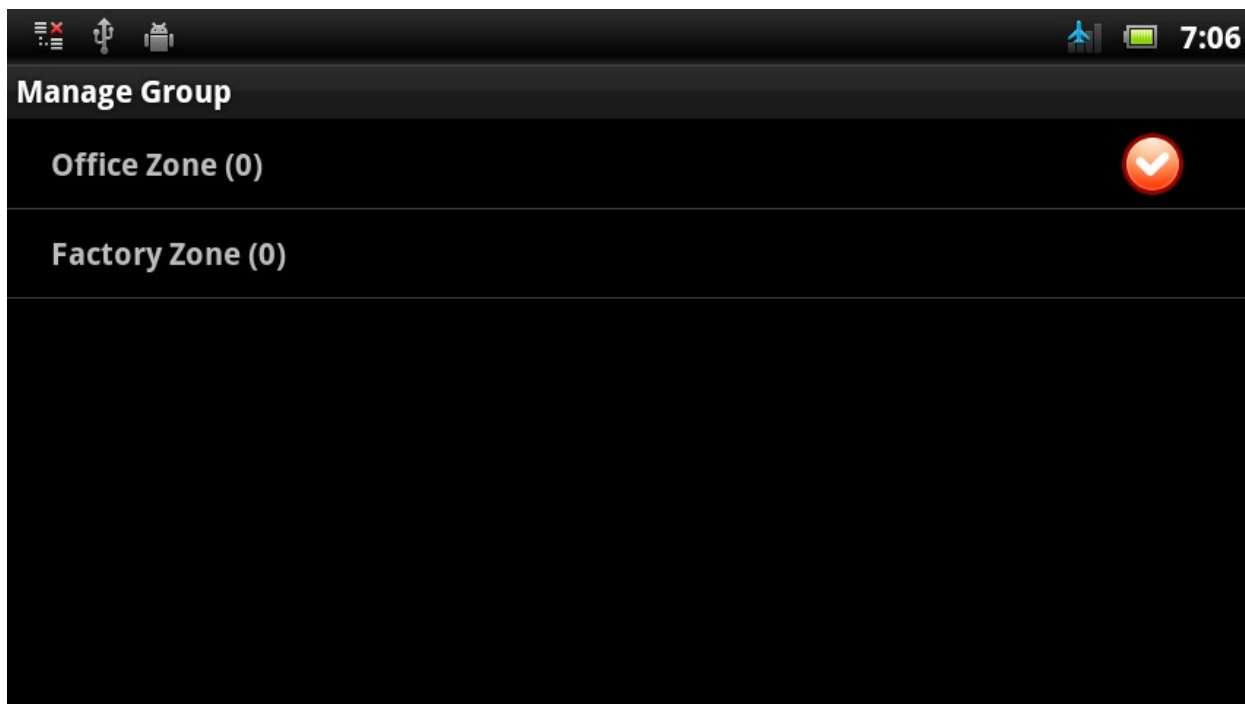


For example, we may create a new group as the following figure:



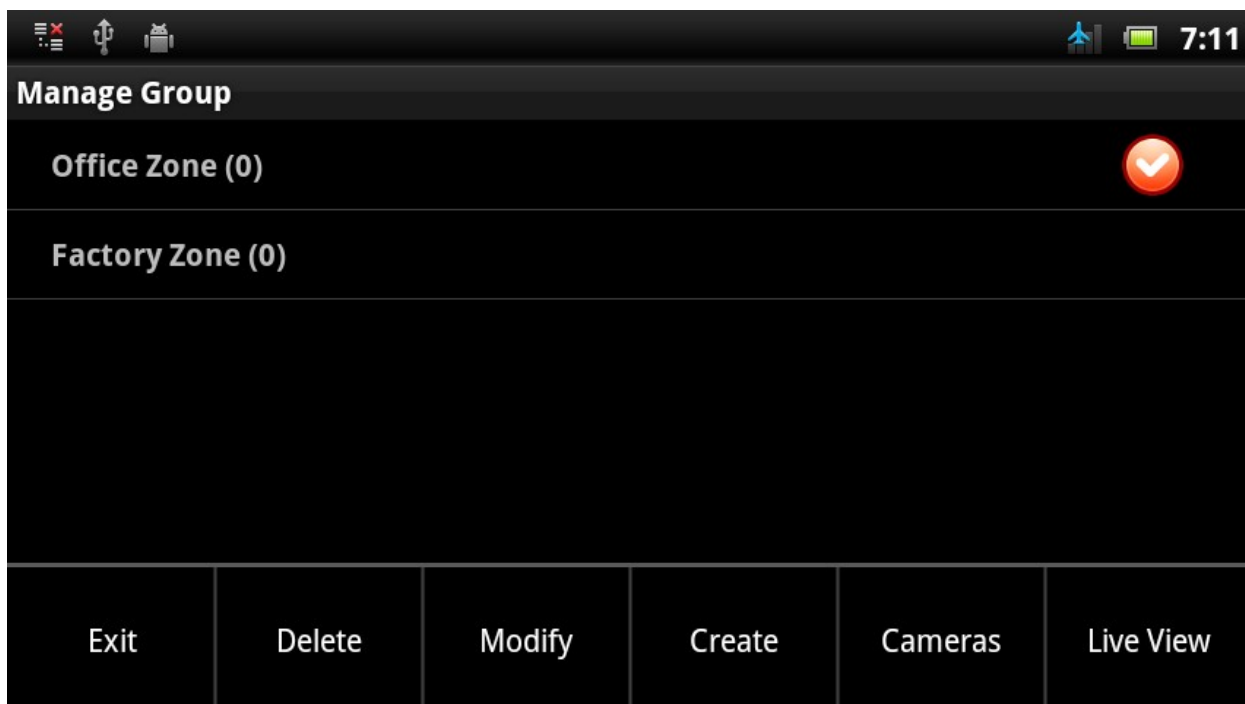
The only field to fill is the name of the group. Click “OK” to create the group.

Here is a illustration of groups:



Long click a list item to enter the live view of the group.

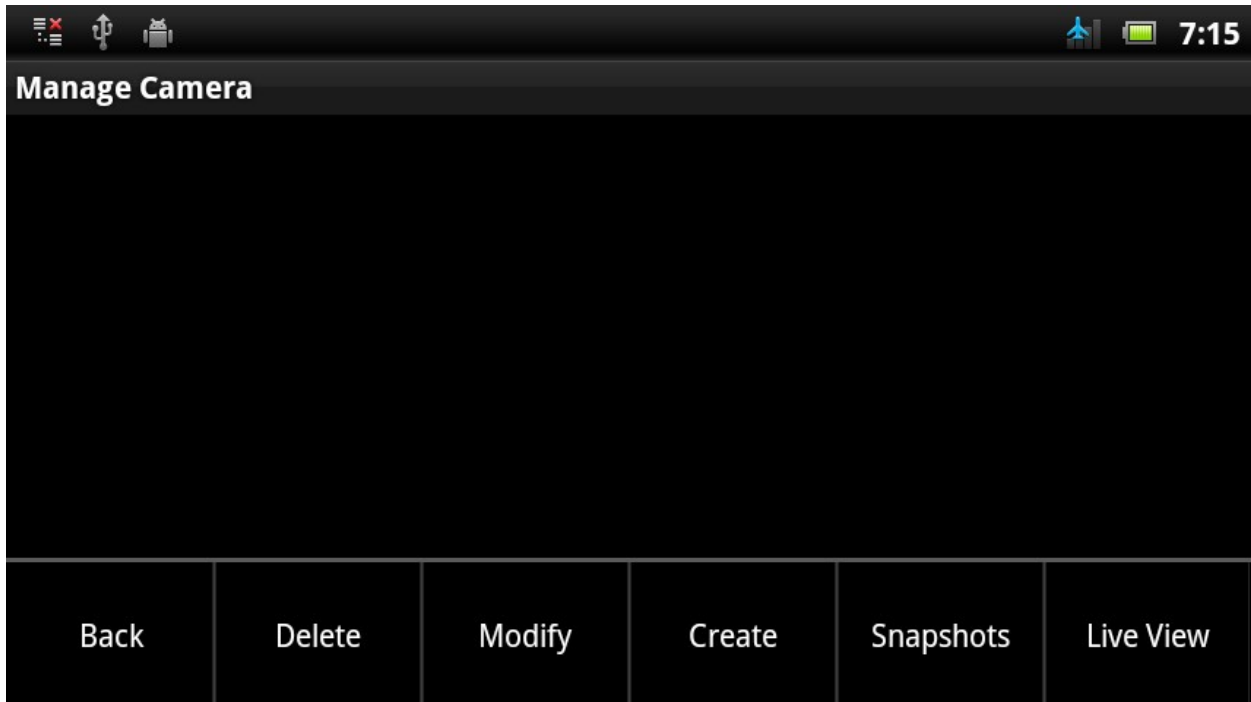
To add cameras, click the “Cameras” option in the menu. See the next section “Manage Camera” to manage your cameras.



3. Manage Camera

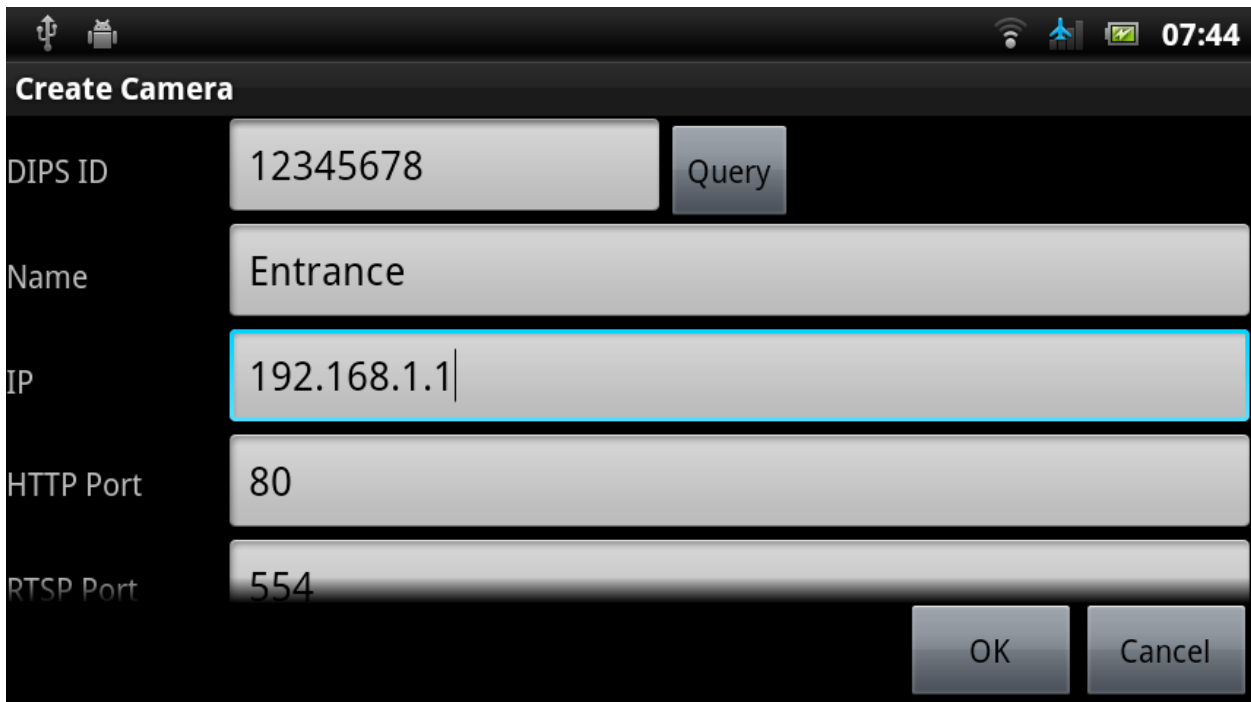
First, you may create your cameras by menu.

Note: The max number of cameras of each group is 4.

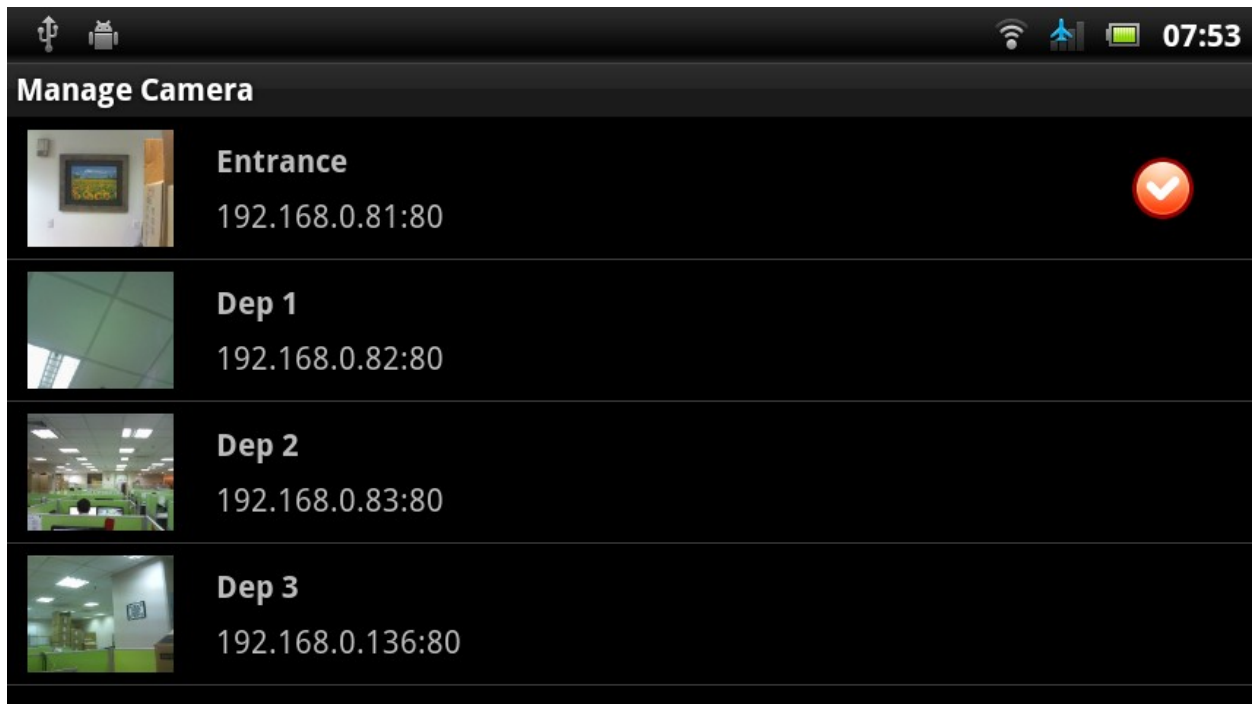


Enter the camera information to create a new camera.

If your camera can be accessed via Internet. You may enter the DIPS ID and then click “Query” to acquire the public IP of your camera by DIPS.



Here is the illustration of camera list:



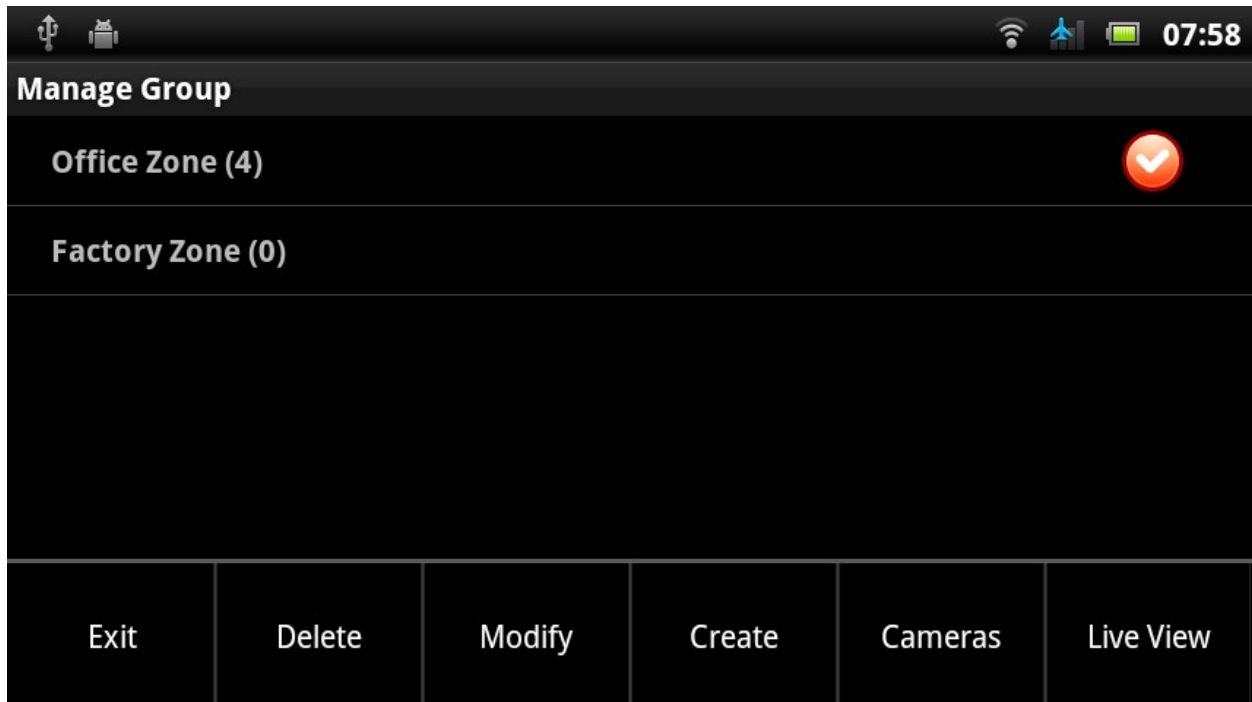
Long click a list item to open the browser to connect to the web interface of the camera.

4. Live View

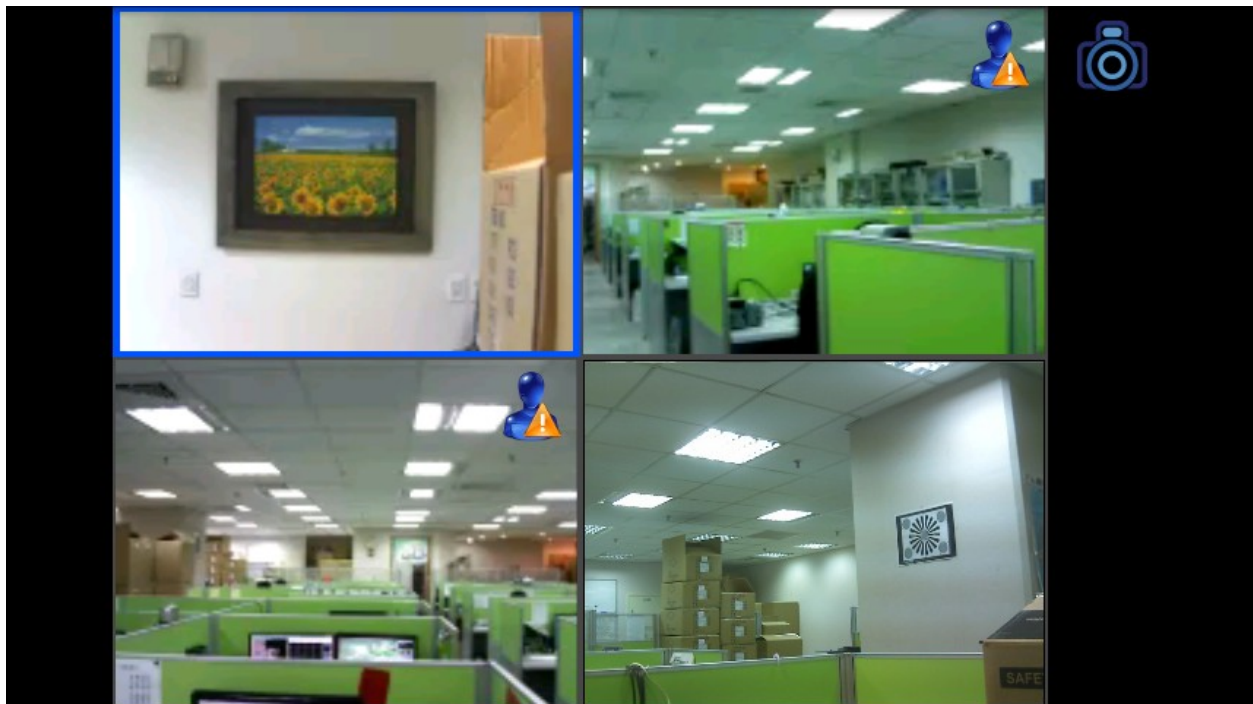
4.1.4-channel View

There are two ways to see live videos of cameras.

One is in the “Manage Group”, click the “Live View” option in the menu.

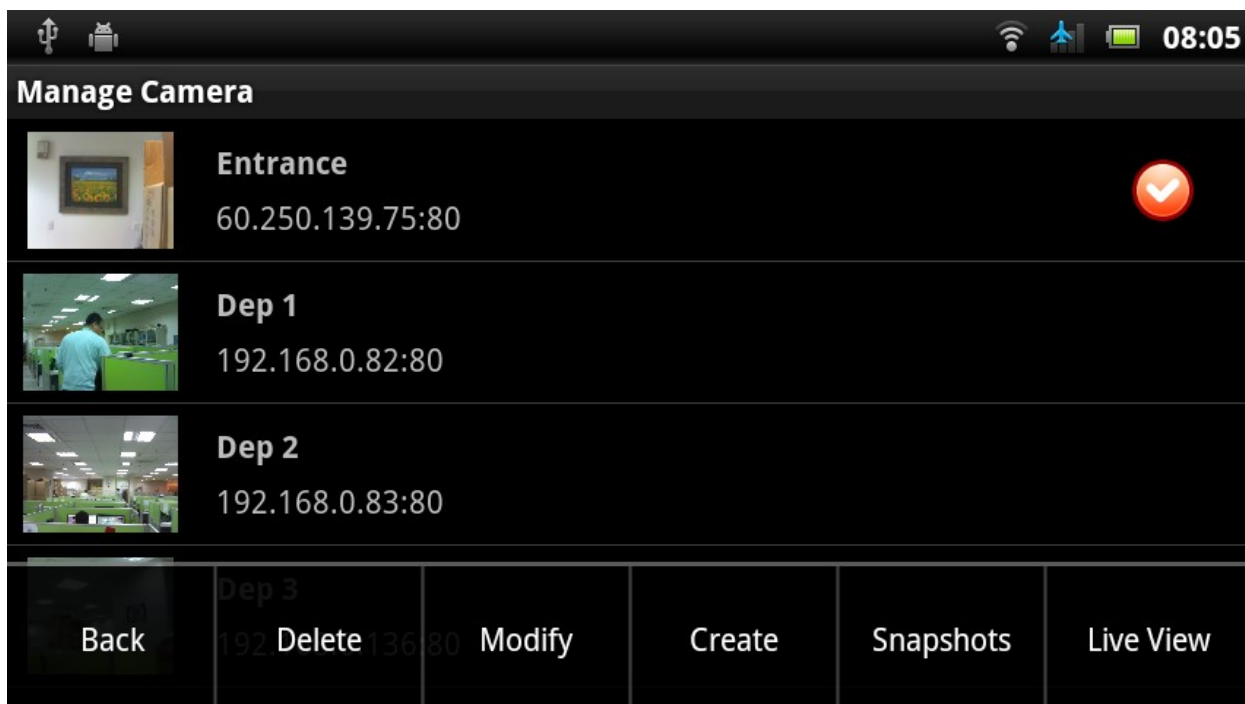


This will display a 4-channel live view:

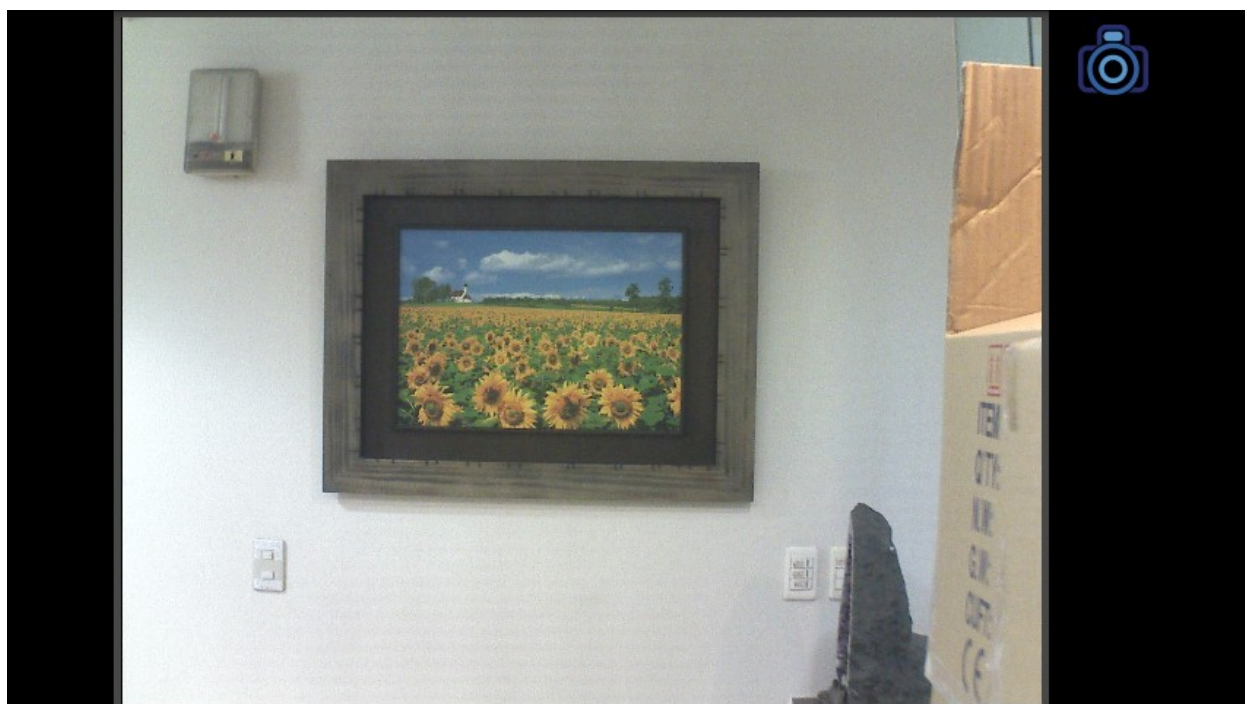


4.2. 1-channel View


The other way is in “Manage Camera” page. Select a camera in the list and then click “Live View” option in the menu.



This will display a 1-channel live view:




4.3. Snapshot

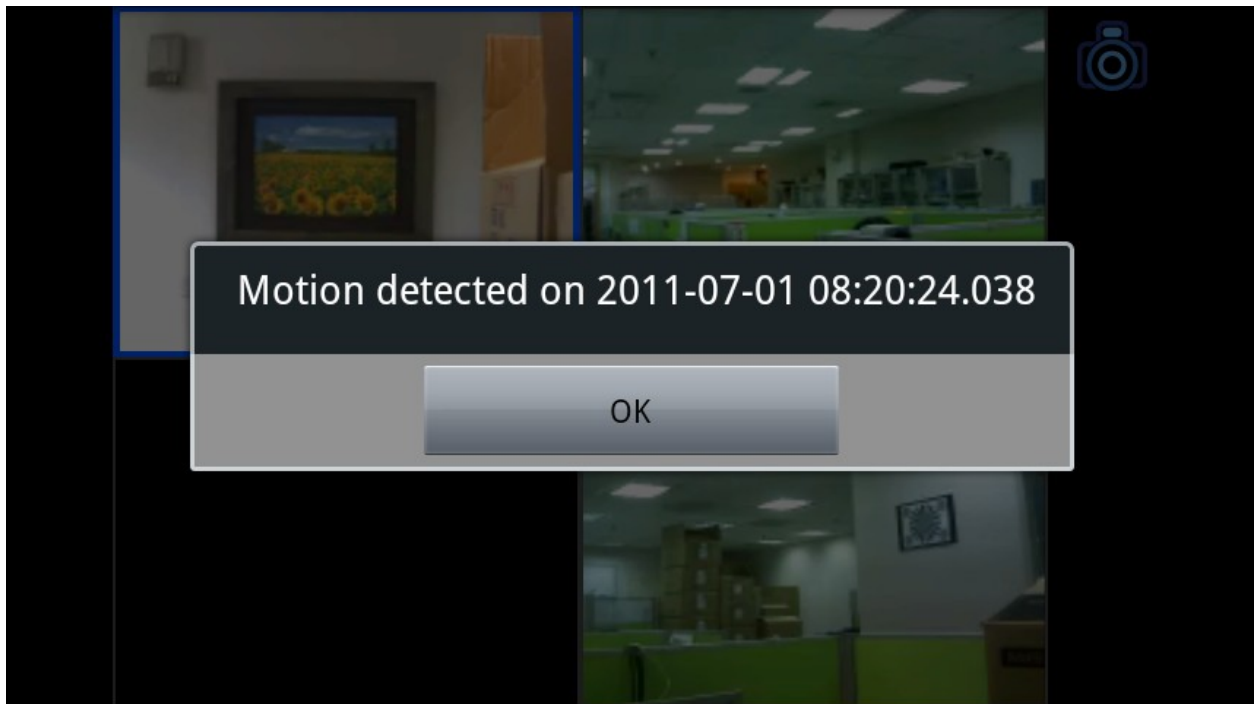
You may click “” to take a snapshot manually. To manage snapshots, see the section “Manage Snapshots”.

Note: The max number of snapshots for all cameras is limited to 400.

4.4. Motion Detection

When a motion of a camera is detected, it will show “” icon to indicate the event.

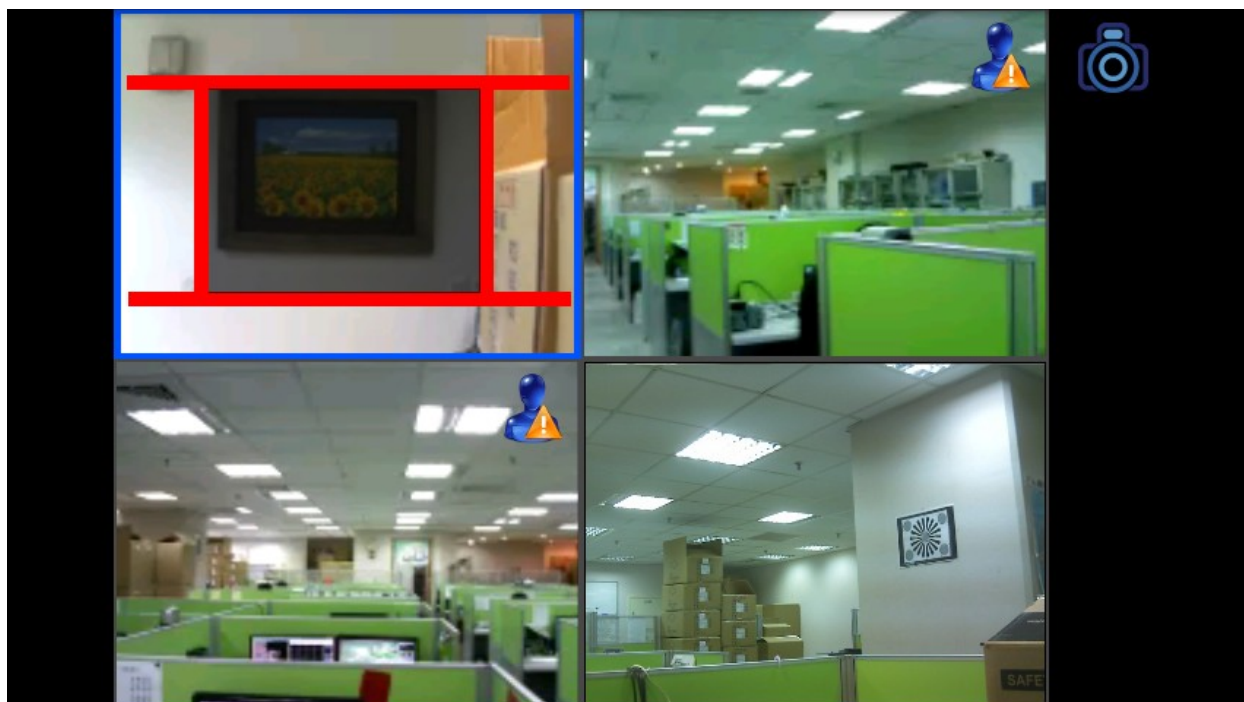
You may click the icon to see the date and time information of the event:



4.5. Pan/Tilt Control

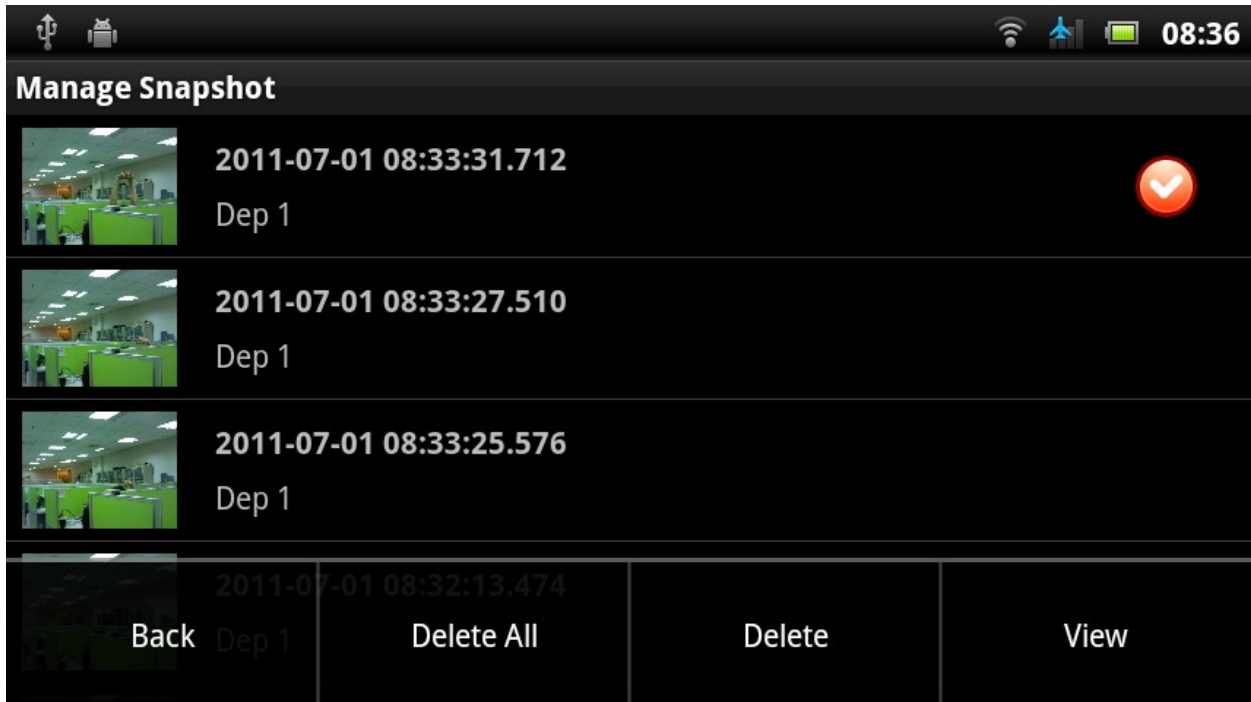
The pan/tilt control can be done in the live view. First, select a camera window you want to control.

Click the left/right/top/down side of the window to pan and tilt the camera.



5. Manage Snapshot

You may enter “Manage Snapshot” page from the menu of “Manage Camera” or “Live View”. In this page, you will see a list of snapshots of a camera.



Long click a list item to view the snapshot image by the built-in image viewer of your Android device.

